

Bcfh\ kYgh'7c``Y[Y
Dc kY``ž' KM

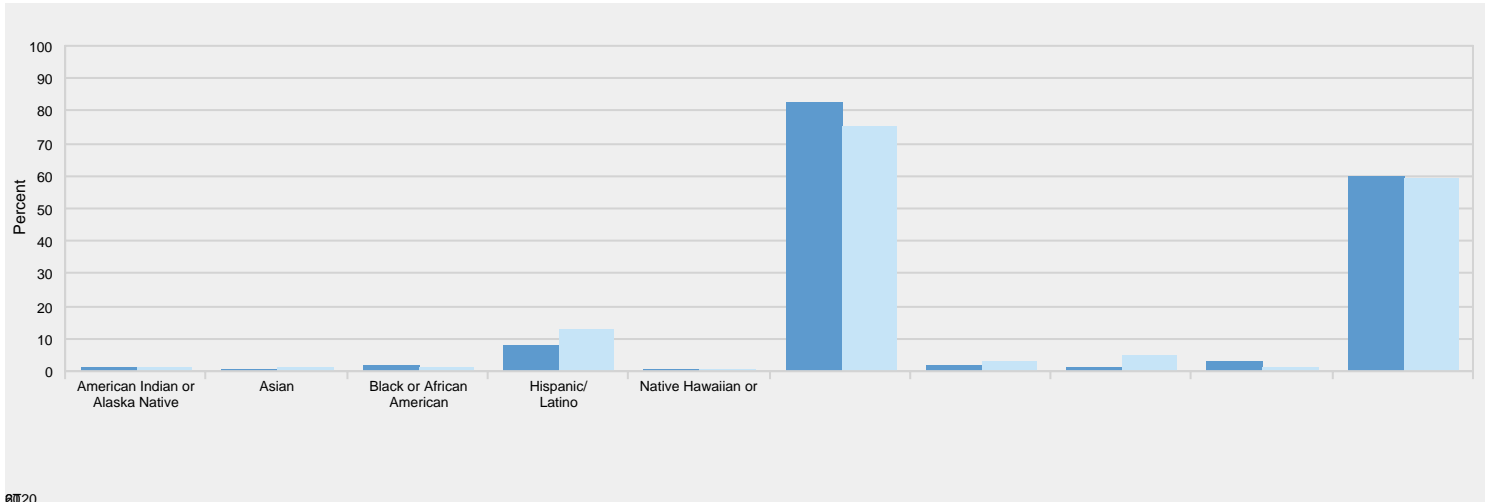
7CAD5F:GCB' ; FCID

Comparison group data are included to provide a context for interpreting your institution's indicators. If your institution did not define a custom comparison group for this report by July 15, 2021 NCES selected a comparison group for you. (In this case, the characteristics used to define the comparison group appears below.) The customized Data Feedback Report function available at <https://nces.ed.gov/ipeds/use-the-data/> can be used to reproduce the figures in this report using different peer groups.

The custom comparison group chosen by Northwest College includes the following 14 institutions:

- ▶ Casper College (Casper, WY)
- ▶ Central Wyoming College (Riverton, WY)
- ▶ Colorado Northwestern Community College (Rangely, CO)
- ▶ Eastern Wyoming College (Torrington, WY)
- ▶ Flathead Valley Community College (Kalispell, MT)
- ▶ Great Falls College Montana State University (Great Falls, MT)
- ▶ Helena College University of Montana (Helena, MT)
- ▶ Laramie County Community College (Cheyenne, WY)
- ▶ Morgan Community College (Fort Morgan, CO)
- ▶ Northeastern Junior College (Sterling, CO)
- ▶ Northern Wyoming Community College District (Sheridan, WY)
- ▶ Otero Junior College (La Junta, CO)
- ▶ Trinidad State Junior College (Trinidad, CO)
- ▶ Western Wyoming Community College (Rock Springs, WY)

:][ifY%' DYfWYbh'cZ'U`gh iXYbhg`Ybfc`YXz`Vm'fUWY#Yh\b]W]hmz`UbX'dYfWYbh'cZ'gh iXYbhg`k\c`UfY'kc a Yb.' :U`&\$\$



NOTE: For more information about disaggregation of data by race and ethnicity, see the Methodological Notes. Median values for the comparison group will not add to 100%. See 'Use of Median Values for Comparison Group' for how median values are determined. N is the number of institutions in the comparison group.

SOURCE: U.S. Department of Education, National Center for Education Statistics, Integrated Postsecondary Education Data System

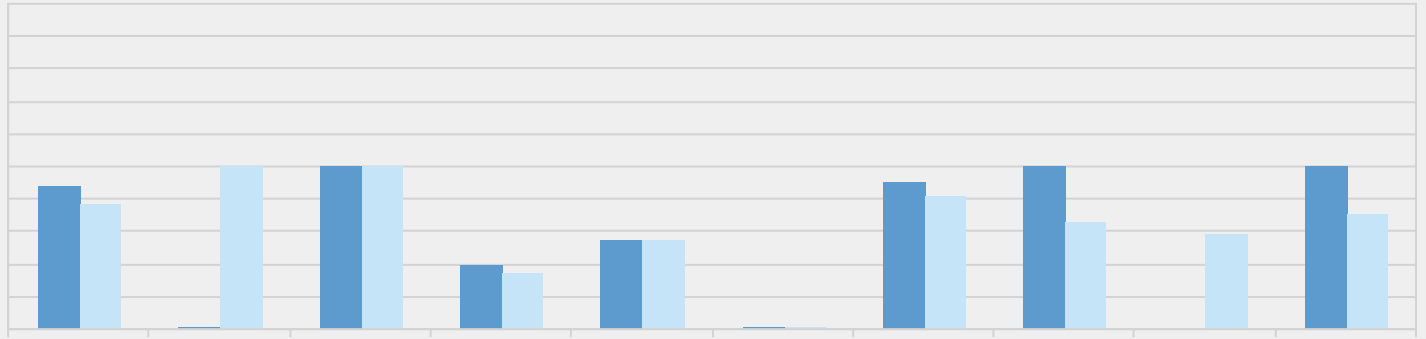
and perce

8 n son

:][ifY'(" DYfWYbh'c2'ghiXYbhg'Ybfc`YX'b`X]ghUbWY'YX iWUh]cb



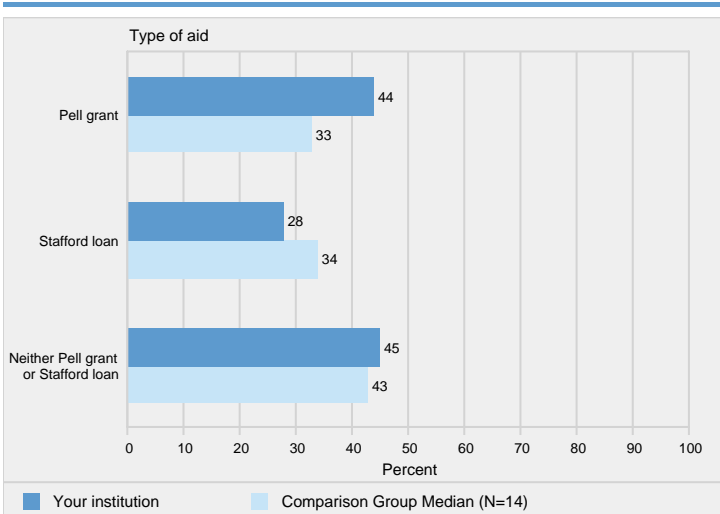
:[i fY%'&" ; fUX i Uh]cb'fUhYg'cZ'Zi`!h] a Yz'Z]fgh!h] a Y'XY [fYY#WYfh]Z]WUhY!gYY_]b[` i bXYf [fUX i UhYg' k]h\]b%)\$ i `cZ'bcf a U`h] a Y'hc'dfc [fU a Wc a d'Yh]cbz'Vm'fUWY#Yh\ b]W]hm. &\$%+`Wc\cfh



NOTE: For more information about disaggregation of data by race and ethnicity, see the Methodological Notes. The graduation rates are the Student Right-to-Know (SRK) rates. Median values for the comparison group will not add to 100%. N is the number of institutions in the comparison group.
 SOURCE: U.S. Department of Education, National Center for Education Statistics, Integrated Postsecondary Education Data System (IPEDS): Winter 2020-21, Graduation Rates component.

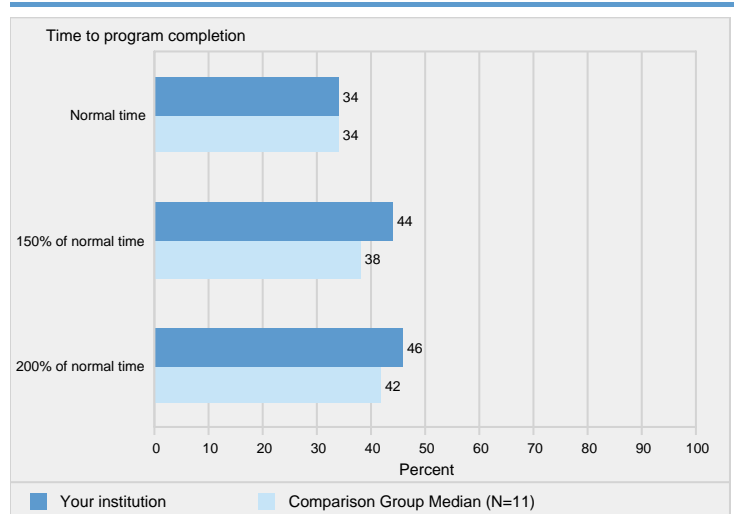
:[i fY%' " ; fUX i Uh]cb'fUhYg'cZ'Zi`!h] a Yz'Z]fgh!h] a Y'XY [fYY#WYfh]Z]WUhY! gYY_]b[` i bXYf [fUX i UhYg' k]h\]b%)\$ i `cZ'bcf a U`h] a Y'hc dfc [fU a `Wc a d'Yh]cbz'Vm'hmdY'cZ'U]X. `&\$%+`Wc\cfh

:[i fY%' (" ; fUX i Uh]cb'fUhYg'cZ'Zi`!h] a Yz'Z]fgh!h] a Y'XY [fYY#WYfh]Z]WUhY! gYY_]b[` i bXYf [fUX i UhYg' k]h\]b`bcf a U`h] a Yz'UbX'%)\$ i UbX'&\$ \$ i `cZ'bcf a U`h] a Y'hc'dfc [fU a `Wc a d'Yh]cb. &\$%* Wc\cfh



NOTE: Graduation rate cohort includes all full-time, first-time degree/certificate-seeking undergraduate students. Data were collected on those students, who at entry of the cohort, were awarded a Pell Grant and students who were awarded a Subsidized Stafford loan, but did not receive a Pell Grant. Graduation rates are the Student Right-to-Know rates. For more details, see the Methodological Notes. N is the number of institutions in the comparison group.

SOURCE: U.S. Department of Education, National Center for Education Statistics, Integrated Postsecondary Education Data System (IPEDS): Winter 2020-21, Graduation Rates component.

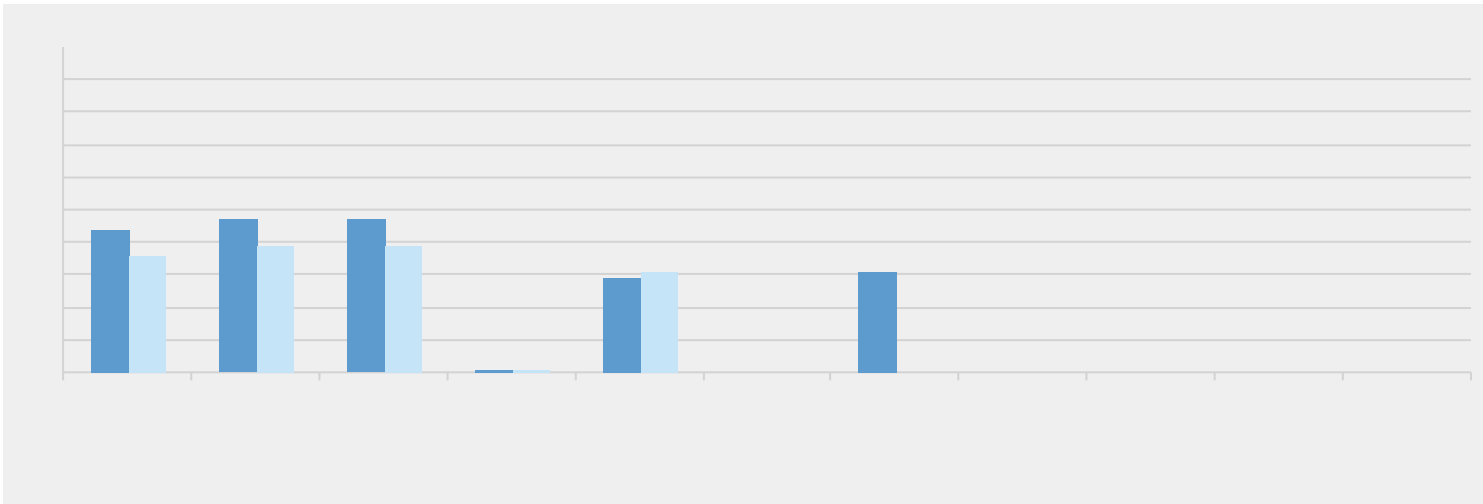


NOTE: The 150% graduation rate is the Student Right-to-Know (SRK) rates; the Normal time and 200% rates are calculated using the same methodology. For details, see the Methodological Notes. N is the number of institutions in the comparison group.

SOURCE: U.S. Department of Education, National Center for Education Statistics, Integrated Postsecondary Education Data System (IPEDS): Winter 2020-21, 200% Graduation Rates component.

:][ifY%+" 5 kUfX'UbX'Ybfc` a Ybh'fUhYg'cZ' bcb!Z]fgh!h] a Yz'Zi`!h] a Yz'XY [fYY#WYfh]Z]WUhY!gYY_]b [i bXYf [fUX i UhYg'UZhYf' , mYUfg'cZ'Ybhfz'Vm'DY` ghUhg. &\$%&!%' Wc\cfh

.....DY`Bcb!DY`
.....fB1%(LfB1%(L



NOTE: Award measures are based on the highest award received after 8 years of entry and enrollment measures are based on students who did not receive an award after 8 years of entry. Student cohorts (i.e., First-time, full-time; First-time, part-time; Non-first-time, full-time; and Non-first-time, part-time) are degree/certificate-seeking undergraduate students who entered the institution between July 1, 2012-June 30, 2013. Pell recipients are students with demonstrated financial need. For more details, see the Methodological Notes. N is the number of institutions in the comparison group. Medians are not reported for comparison groups with less than three values.
SOURCE: U.S. Department of Education, National Center for Education Statistics, Integrated Postsecondary Education Data System (IPEDS); Winter 2020-21, Outcome Measures component.

:][ifY%, " 5 kUfX'UbX'Ybfc` a Ybh'fUhYg'cZ' bcb!Z]fgh!h] a Yz'dUfh!h] a Yz'XY [fYY#WYfh]Z]WUhY!gYY_]b [i bXYf [fUX i UhYg'UZhYf' , mYUfg'cZ'Ybhfz'Vm'DY` ghUhg. &\$%&!%' Wc\cfh

:][ifY%- " DYfWYbh'X]ghf]Vih]cb'cZ'WcfY'fYjYbiYgž'Vm'gc ifWY.' :]gWU'
mYUf'&\$&\$

NOTE: The comparison group median is based on those members of the comparison



GhiXYbh'9bfc`aYbh

Ò}:[[[{^}d'Ô[~}c•

12-month Enrollment captures a cumulative unduplicated headcount of enrollment over the full 12-month period beginning July 1 and ending June 30. In contrast, Fall Enrollment captures number of students enrolled on a particular date in the fall. Fall enrollment is often referred to as a "snapshot" of an institution's enrollment at a specific time.

ØVÔiÒ}:[[[{^}c

The full-time equivalent (FTE) enrollment used in this report is the sum of the institution's FTE undergraduate enrollment and FTE graduate enrollment (as calculated from or reported on the 12-month Enrollment component). Undergraduate and graduate FTE are estimated using 12-month instructional activity (credit and/or contact hours). See "Calculation of FTE Students (using instructional activity)" in the IPEDS Glossary at <https://surveys.nces.ed.gov/ipeds/VisGlossaryAll.aspx>.

7c a d`Yh]cbg

Ô[{]|^câ[} •hæ} ãhÔ[{]|^c^!•

Completions collects data on undergraduate and graduate completions and completers in a 12-month period. Completions are the counts of postsecondary awards granted where each award reported once but multiple awards may be reported for one recipient. Completers are the counts of students granted postsecondary awards. The count of completers is collected in two ways. The first way counts all completers, while the second way counts only completers who are currently enrolled at the institution.



Ö'æä ~æö[}ÄÜæc^•Áæ}âÁV'æ}•-^!Ë[~cÄÜæc^

Graduation rates are those developed to satisfy the requirements of the Student Right-to-Know Act and Higher Education Act, as amended, and are defined as the total number of individuals from a given cohort of full-time, first-time degree/certificate-seeking undergraduates who completed a degree or certificate within a given percent of normal time to complete all requirements of the degree or certificate program; divided by the total number of students in the cohort of full-time, first-time degree/certificate-seeking undergraduates minus any allowable

At degree-granting institutions, core revenues exclude revenues from auxiliary enterprises (e.g., bookstores and dormitories), hospitals, and independent operations. Non-degree-granting institutions do not report revenue from auxiliary enterprises in a separate category, and thus may include these amounts in the core revenues from other sources.

Ô[!^!Ôø] ^}•^•

Core expenses include expenses for instruction, research, public service, academic support, student services, institutional support, scholarships and fellowships (GASB) or net grant aid to students (FASB) and other expenses. Core expenses exclude expenses for auxiliary enterprises, hospitals, and independent operations. "Other core expenses" is the sum of grant aid/scholarships and fellowships and other expenses.

Ò}â[, { ^}c!E••^c•

Endowment assets, for public institutions under GASB standards, and private, not-for-profit institutions under FASB standards, include gross investments of endowment funds, term endowment funds, and funds functioning as endowment for the institution and any of its foundations and other affiliated organizations. Private, for-profit institutions under FASB do not hold or report endowment assets.

Úæ|æ!â^•!æ}â! Yæ *^•

Salaries and wages for public institutions under GASB standards and private (not-for-profit and for-profit) institutions under FASB standards, include amounts paid as compensation for services to all employees regardless of the duration of service, and amounts made to or on behalf of an individual over and above that received in the form of a salary or wage.

GhUZZ

øVÔ!Úæ~

The full-time-equivalent (FTE) by occupational category is calculated by summing the total number of full-time staff and adding one-third of the total number of part-time staff. Occupational categories include instructional staff, research staff, public service staff, instructional support staff, management staff, and other occupations. Instructional staff are primarily engaged in teaching and do a combination of teaching, research, and/or public service. Research staff are staff whose primary function is research while public service staff are staff whose primary

5XX]h]cbU` FYgc i fWYg

Additional information on the IPEDS survey components, including survey methodology, survey forms, and frequently asked questions, can be found at <https://nces.ed.gov/ipeds/use-the-data/survey-components>.

Additional definitions of variables used in this report can be found in the IPEDS glossary available at <https://surveys.nces.ed.gov/ipeds/VisGlossaryAll.aspx>.

Additional resources on the IPEDS Data Feedback Report, including the instructions on creating a custom comparison report, FAQs, and video tutorials, can be found at <https://nces.ed.gov/lpeds/Help/View/2>.